

# RESIN STYLE PAVING



**Avoid a costly dig out and have our unique resin bound overlay system installed to overlay your existing driveway, path or patio area**

It's an ideal solution for your tired looking concrete, block paving, tarmac or slab stoned surfaces.

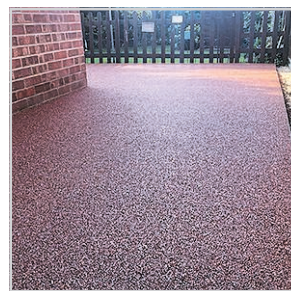
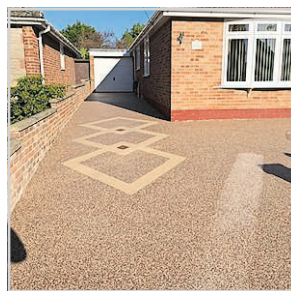
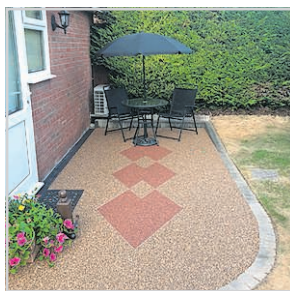
With resin bound being fully porous no planning permission is required as it is fully self draining.

With over 40 colour options available you can totally bespoke your outdoor surfaces.

Resin bound has no loose stones leaving a smooth finish which is anti slip. Using our resin bound surfacing system you can turn your outside area in to a maintenance free surface, meaning no more weeds or moss.



- Overlay your existing hard surface
- No more weeds
- Fully self draining
- Eco friendly
- No more puddles
- No planning permission required
- 40 colour options available
- No loose stones
- Natural look
- 10 year guarantee
- 1 day installation
- Instant transformation
- No digging required
- Anti-slip
- Gives your property the ultimate transformation
- No deposit required



Contact us today for a free quote: Web: [www.resinstylepaving.co.uk](http://www.resinstylepaving.co.uk)

Tel: **01603 850290**

