

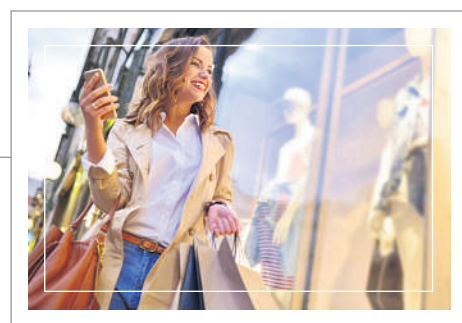
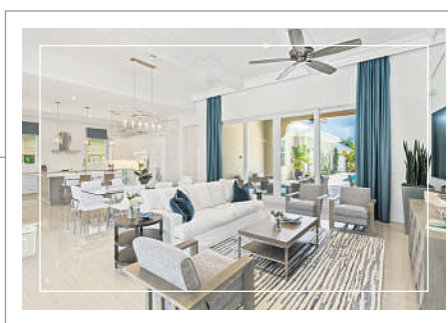
WHY SETTLE FOR A BUILDER-DESIGNED HOME...



... WHEN YOU CAN BUILD THE CUSTOM HOME YOU REALLY WANT?

While the typical homebuilding experience involves limited options, at Martinique Estates, when we say "Custom Estates," we mean a luxurious home built just for you and your unique lifestyle. Signature touches of elegance, fine attention to detail and custom features to fit your needs are what a home by Groundstone Homes is all about. Live in the architecturally inspired Florida-Caribbean Estate Home that you design, on a homesite that you choose, in a dream location that exists right now: Abacoa in Jupiter.

Abacoa homesites near shops, restaurants, golf, entertainment, Roger Dean Chevrolet Stadium, and more!




GROUNDSTONE
HOMES

Three to five bedroom estate homes priced from \$1 million. Hurry! Only 8 homesites left!

Come visit our model at 2590 Greenway Drive, Jupiter, FL 33458
Open Friday, Saturday and Sunday 10am-4pm • Call Paula **561.603.3796**

abacoaestatehomes.groundstone.net

